

GETTING STARTED *(Quick guide)*

Clip-On Microphone

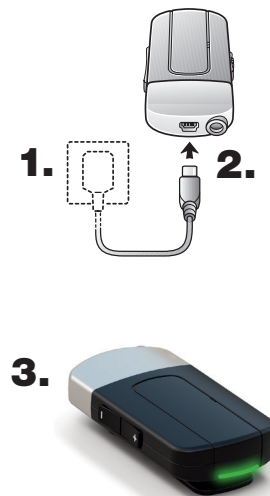
Before you can use your Clip-On Microphone it is necessary to:

- Charge your Clip-On Microphone for at least 3 hours.
- Pair with your hearing instruments.

NOTE! Check with your hearing healthcare professional to determine if your instruments have been pre-paired. Instruments that have been pre-paired do not need to be paired again.

A CHARGE YOUR CLIP-ON MICROPHONE

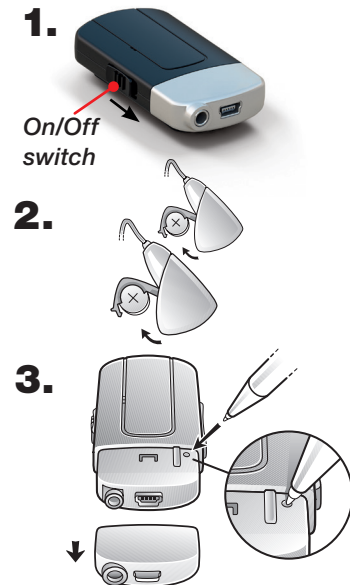
1. Plug one end of the charging cable into the Clip-On Microphone.
2. Plug the other end of the charging cable into a power outlet.
3. Generally, charging is complete when the red LED indicator turns solid green interrupted by a red blink every 2 seconds. However, when charging for the first time allow it to charge for at least 3 hours, even if the battery indicator indicates that the battery is fully charged.



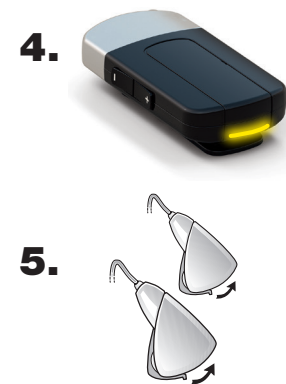
B PAIR WITH YOUR HEARING INSTRUMENTS

PAIRING THE CLIP-ON MICROPHONE IN CHANNEL 1

1. Turn on your Clip-On Microphone by sliding the ON/OFF switch down to the ON position.
2. Open the battery doors on both hearing instruments.
3. Remove the cover from the Clip-On Microphone. Press the pairing button once to put the Clip-On Microphone in pairing mode for 20 seconds.



4. The LED indicator will now blink yellow once every 2 seconds to indicate that it is ready to be paired in channel 1.
5. While in pairing mode close the battery doors on both hearing instruments.
6. Successful pairing will be indicated by an audible melody played in both hearing instruments. Replace the cover on the Clip-On Microphone once pairing is complete.



PAIRING THE CLIP-ON MICROPHONE IN CHANNELS 2 OR 3

It is possible to pair up to three streaming accessories with a given pair of hearing instruments.

To pair a Clip-On Microphone in channel 2:

- Follow steps 1 and 2 under **B**.
- Then press the pairing button of the Clip-On Microphone **TWO** times. The LED indicator will now blink yellow twice every 2 seconds to indicate that it is ready to be paired in channel 2.

To pair a Clip-On Microphone in channel 3:

- Follow steps 1 and 2 under **B**.
- Then press the pairing button **THREE** times. The LED indicator will blink yellow three times every 2 seconds.

Finish by closing the battery door on both hearing instruments.

C LISTENING TO SOUND FROM YOUR CLIP-ON MICROPHONE

Turn on the Clip-On Microphone and make sure your hearing instruments are turned on. Streaming may be started in one of two ways:

OPTION A: Press and hold the push button on both hearing instruments for about 3 seconds;

OR:

OPTION B: If you have a compatible Remote Control (optional), simply press the streaming button.

Once the Clip-On Microphone has been connected

an audible melody will play in your hearing instruments. This will be followed by either the sound coming from the Clip-On Microphone or the sound coming from a connected auxiliary audio device (See section D).



LISTENING TO SOUND FROM A SECOND OR THIRD STREAMING ACCESSORY

Your hearing instruments can be paired to as many as three compatible streaming accessories. Each time you press and hold the push button on the hearing instruments or press the streaming button on the compatible Remote Control (optional), you will advance to the next streaming program. In doing so, you can access a second or third streaming accessory.



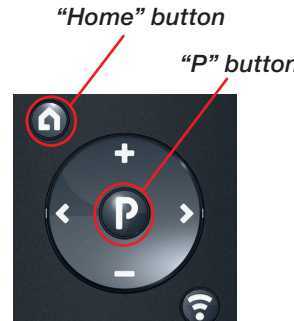
TO STOP LISTENING TO A STREAMING PROGRAM

To stop listening to a streaming program and return to the last listening program used:

OPTION A: Quickly press and release the push button on both hearing instruments;

OR:

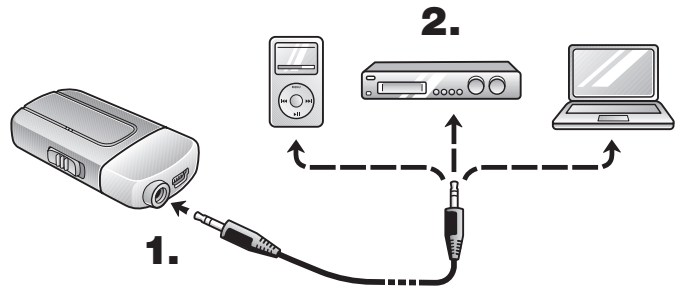
OPTION B: Press the "P" button, located in the center of the Remote Control key pad. You may also press the "Home" button to return to your default settings.



D USING THE LINE-IN

The line-in can be used to stream audio signals from most audio devices directly to your hearing instruments.

1. Insert the included cable into the line-in jack on the Clip-On Microphone.
2. Plug the other end of the cable into the AUDIO OUT on the audio device from which you wish to stream.



E VOLUME CONTROL—MICROPHONE AND LINE-IN

1. Use the "+" and "-" keys to adjust volume to a comfortable level. Make sure that your hearing instruments are comfortably adjusted before changing the volume on the Clip-On Microphone.



Tips and Support
For more details on the Clip-On Microphone, refer to the user guide.

ReSound North America
8001 Bloomington Freeway
Bloomington, MN 55420
phone: 1-888-735-4327

ReSound Canada
303 Supertest Road
Toronto, Ontario M3J 2M4
phone: 1-888-737-6863

GETTING STARTED
(Quick Guide)
Clip-On Microphone



17766144-US-13.08-Rev.A